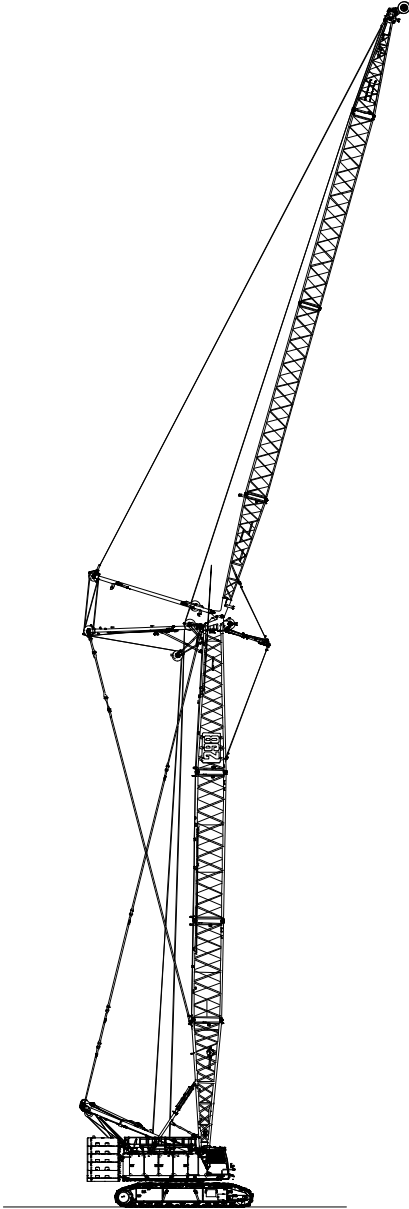


Technical Data

Luffing Capacities



CAUTION: This material is supplied for reference use only. Operator must refer to in-cab Crane Rating Manual and Operator's Manual to determine allowable crane lifting capacities and assembly and operating procedures.

Attachment

Conventional Tube Boom 60–290 ft (18.29–88.39m)

Basic Boom

60 ft (18.29m) two-piece design that utilizes a 30 ft (9.14m) base section and a 30 ft (9.14m) top section with in-line connecting pins on 80 in (2.03m) wide and 68 in (1.73m) deep centers.

- Boom foot on 53.17 in (1.35m) centers
- Lugs on base section for self assembly
- Self assembly cylinder
- Idler sheave assembly on top section
- Permanent skid pads mounted on top section to protect head machinery
- Six, 23 in, (0.58m) root diameter polyamide sheaves mounted on sealed anti-friction bearings
- Tip extension, fixed jib and luffing jib connecting lugs on top section
- Mechanical boom angle indicator

Tube Boom Extensions

The following table provides the lengths available and the suggested quantity to obtain maximum boom in 10 ft (3.05m) increments. Midpoint pendant connections are required at 140 ft (42.67m) for boom lengths of 250 ft (76.20m) and greater.

Tube Boom Extensions		Quantity For Max Boom
ft	m	
10	3.05	1
20	6.10	2
30	9.14	2
40	12.19	3

- Polyamide wear blocks on top of each extension
- Maximum tip height of 294 ft 9.3 in (89.85m)
- Boom connecting pins storage on each extension

Tube Jib 30–90 ft (9.14–27.43m)

Basic Tube Jib

30 ft (9.14m) two-piece design that utilizes a 15 ft (4.57m) base section and a 15 ft (4.57m) top section with in-line connecting pins on 30 in (0.76m) wide and 36 in (0.91m) deep centers.

- 2.25 in (5.72cm) diameter chords
- One 21 in (53.34m) root diameter steel sheave mounted on sealed anti-friction bearings
- 10 ft (3.0m) jib extension provides jib lengths of 40 ft (12.19m), 60 ft (18.29m), and 80 ft (24.38m).
- 20 ft (6.10m) jib extensions provide jib lengths of, 50 ft (15.24m), 70 ft (21.34m), and 90 ft (27.43m).
- Jib offset angles at 10°, 20°, and 30°
- The maximum tip height of boom + jib [250 ft + 90 ft (76.2 + 27.43m)] is 342ft 3.2 in (104.32m).

Auxiliary Tip Extension

Designed to use in place of jib to provide clearance between working hoist lines. The extension is equipped with one nylon 23 in (0.58m) root diameter sheaves mounted on sealed anti-friction bearings. Maximum capacity is 25 Ton (22.68mt).

Luffing Boom 110–190 ft (33.53–57.91m)

- Common base, top and extensions with conventional boom
- Working angles of 88°, 85°, 80°, 75°, 70°, and 65°
- Working lengths of 110 ft (33.53m) to 190 ft (57.91m)
- Rear drum becomes luffing jib hoist
- Optional third drum provides second load hoist
- Designed for self-assembly
- Job site mobility with attachment
- Compact transport module

Luffing Boom Extensions

The following table provides the lengths available and the suggested quantity to obtain the maximum luffing boom. Midpoint pendants are not required.

Luffing Boom Extensions		Quantity For Max Luffing Boom
ft	m	
“JE” Wall		
40	12.19	2
“JN3” Wall		
20	6.10	1
30	9.14	1

Note: First 50 ft of luffing boom extensions must be “JN3” w/heavy wall

Luffing Jib 85–195 ft (25.91–49.44m)

Basic Luffing Jib

85 ft (25.91m) basic luffing jib design utilizes a 25 ft (7.62m) luffing jib base section, 40 ft (12.19m) luffing jib extension, and a 20 ft (6.10m) top section with in-line connecting pins on 60 in (1.52m) wide and 50 in (1.27m) deep centers.

- Working lengths of 85 ft (25.91m) to 195 ft (59.44m)
- Top section includes mounting lugs for fixed jib
- Two 21 in (0.53m) root diameter poly-mide luffing jib head sheaves mounted on sealed anti-friction bearings
- Six 23 in (0.58m) root diameter poly-mide luffing boom auxiliary head sheaves mounted on sealed anti-friction bearings
- Pin-on nose wheel
- Ten-part luffing jib hoist
- Appropriate length wire rope pendants
- The maximum boom length of luffing boom + luffing jib [180 ft + 195 ft (54.86 + 59.44m)] is 375 ft (114.3m).

Luffing Jib Extensions

The following table provides the lengths available and the suggested quantity to obtain the maximum luffing jib. Midpoint pendants are not required.

Luffing Jib Extensions		Quantity For Max Luffing Jib
ft	m	
“FE” Wall		
20	6.10	2
30	9.14	1
40	12.19	2

Note:

- Polymide wear blocks on top of each section
- The maximum tip height is 375.9 ft (114.6m).

Fixed Jib 30 ft (9.14m)

Basic Tube Jib

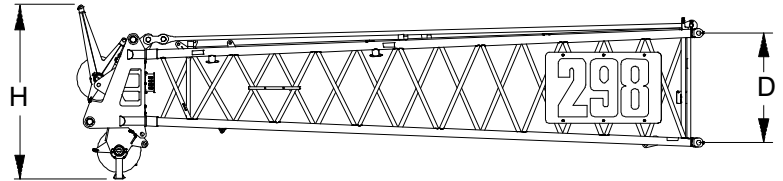
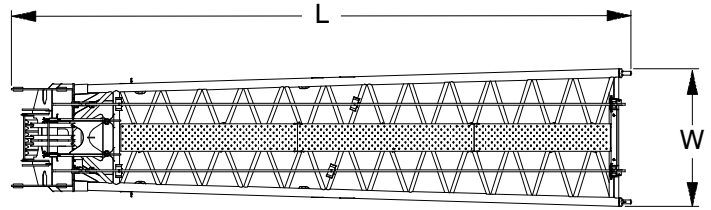
30 ft (9.14m) design that utilizes a 15 ft (4.58m) base section, and a 15 ft (4.58m) top section with in-line connecting pins on 36 in (0.91m) wide and 30 in (0.76m) deep centers.

- 2.25 in (5.72cm) diameter tubular chords
- One 21 in (0.53m) root diameter steel sheave mounted on sealed anti-friction bearings
- The maximum boom length of luffing boom + luffing jib + fixed jib [180 ft + 165 ft + 30 ft (54.86 + 50.29 + 9.14m)] is 375 ft (114.3m)
- The maximum tip height of 379.0 ft (115.52m)

Boom/Luffing Boom

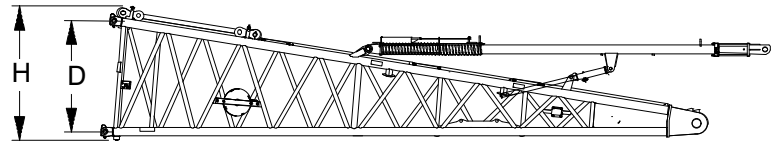
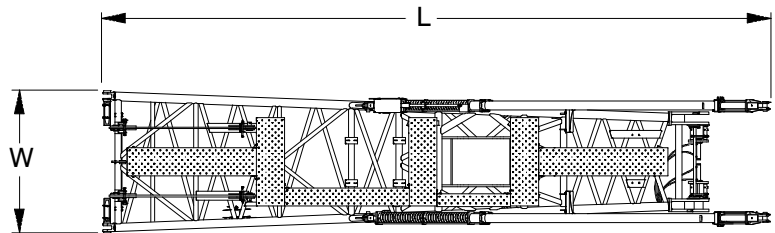
30 ft (9.14m) Boom Top Section ①

Length	32 ft 0.9 in	(9.78m)
Width	85.25 in	(2.17m)
Deep	68 in	(1.73m)
Height	108 in	(2.74m)
Weight	9,699 lb	(4 399kg)



30 ft (9.14m) Boom Base Section ①

Length	34 ft 1 in	(10.39m)
Width	86.6 in	(2.2m)
Deep	68 in	(1.73m)
Height	82.1 in	(2.09m)
Weight	8,341 lb	(3 783kg)

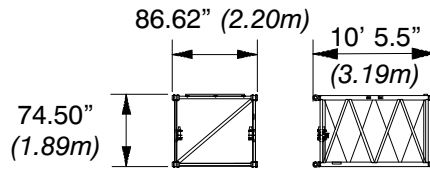


Number inside black circle “①” = # of components

68 in (1.73m) x 80 in (2.03m) Boom/Luffing Boom Extensions

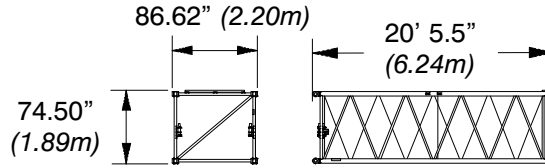
10 ft (3.05m) Extension

Weight†: 1,611 lb (730kg)
† Weight includes pins and pendants.



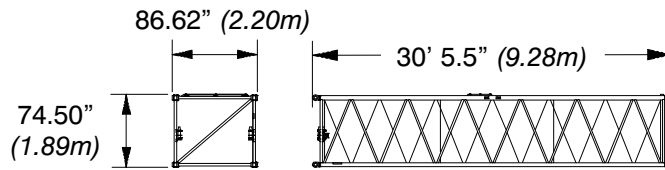
20 ft (6.10m) Extension

Weight†: 2,646 lb (1 206kg)
† Weight includes pins and pendants.



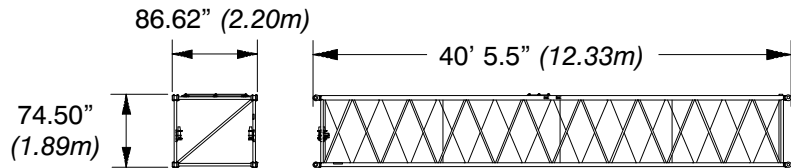
30 ft (9.14m) Extension

Weight†: 3,730 lb (1 691kg)
† Weight includes pins and pendants.



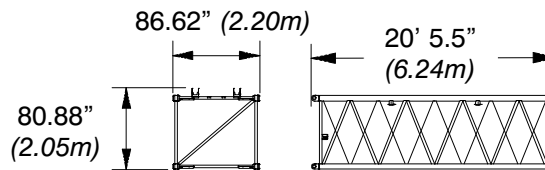
40 ft (12.19m) Extension

Weight†: 4,834 lb (2 192kg)
† Weight includes pins and pendants.



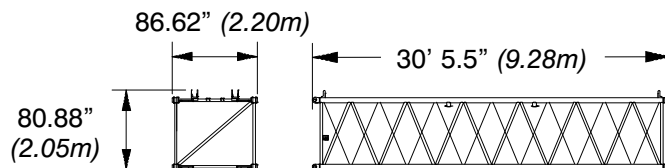
20 ft (6.10m) HD Extension

Weight†: 3,036 lb (1 377kg)
† Weight includes pins and pendants.



30 ft (9.14m) HD Extension

Weight†: 4,306 lb (1 953kg)
† Weight includes pins and pendants.



Number inside black circle "1" = # of components

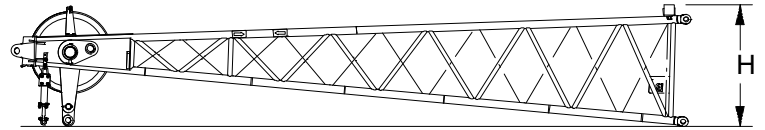
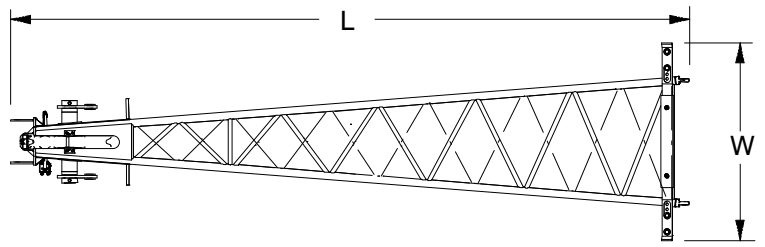
Jib/Luffing Fixed Jib

15 ft (4.57m) Jib

Top Section* ①

Length	16 ft 7 in	(5.05m)
Width	57.8 in	(1.47m)
Height	35.62 in	(0.9m)
Weight†	828 lb	(376kg)

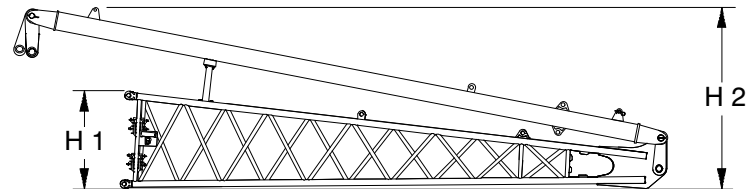
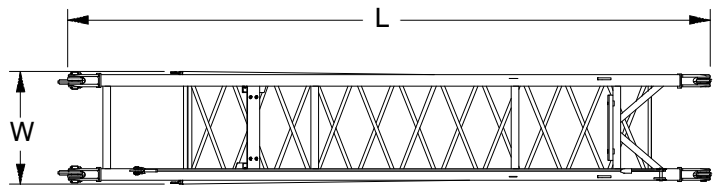
† Weight includes hardware.



15 ft (4.57m) Jib Base & Strut Section* ①

Length	18 ft 2.7 in	(5.56m)
Width	38.2 in	(0.97m)
Height 1	32.66 in	(0.83m)
Height 2	61.1 in	(1.55m)
Weight†	2,288lb	(1 038kg)

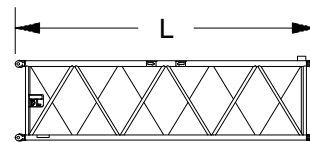
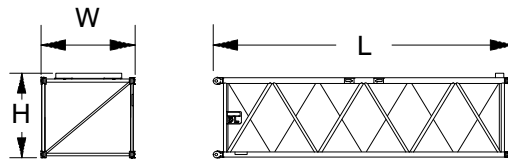
† Weight includes pins, basic frontstay & backstay pendants, and hardware.



10 ft (3.05m) Jib Extension* ①

Length	10 ft 3 in	(3.12m)
Width	38 in	(0.97m)
Height	34.50 in	(0.88m)
Weight†	363 lb	(165kg)

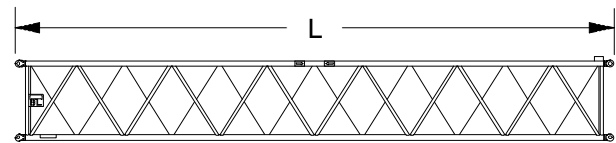
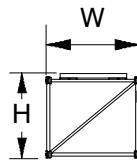
† Weights includes pins, pendants, and hardware.



20 ft (6.10m) Jib Extension* ①

Length	20 ft 3 in	(6.17m)
Width	38 in	(0.97m)
Height	34.50 in	(0.88m)
Weight†	592 lb	(269kg)

† Weights includes pins, pendants, and hardware.



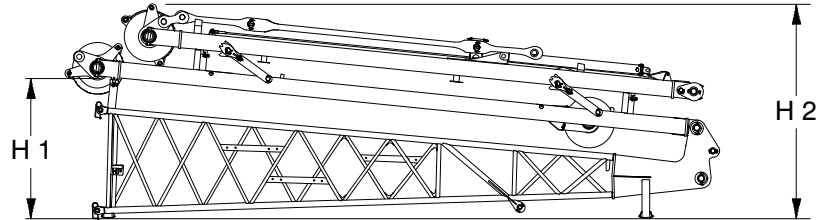
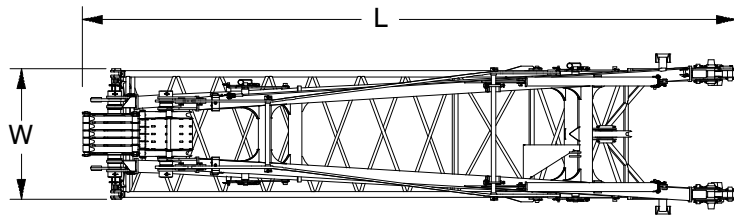
Number inside black circle “①” = # of components

* – Optional equipment

Luffing Jib Transport Configuration* ①

Length	27 ft 1.1 in	(8.26m)
Width	64.92 in	(1.65m)
Height 1	69.11 in	(1.76m)
Height 2	106.51 in	(2.71m)
Weight 1†	11,057 lb	(5 015kg)
Weight 2†	8,828 lb	(4 004kg)

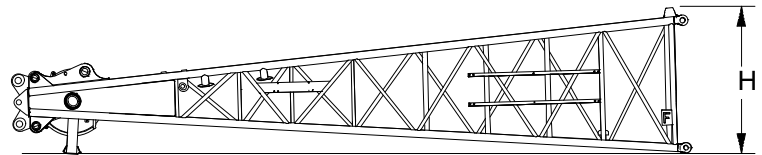
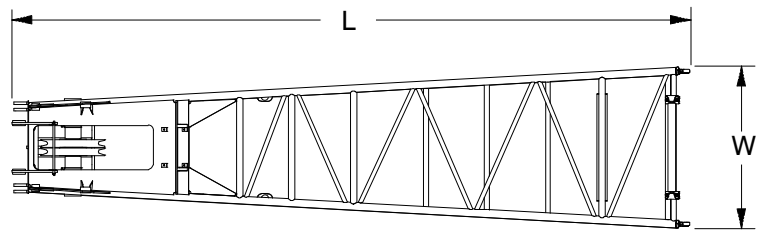
† Weight 1 includes pins, basic frontstay & backstay pendants, and hardware. Weight 2 includes transport configuration only.



20 ft (6.10m) Luffing Jib Top Section* ①

Length	22 ft 1 in	(6.73m)
Width	63.12 in	(1.6m)
Height	57.06 in	(4.76m)
Weight†	1,981 lb	(899kg)

† Weight includes pendants and hardware.



Number inside black circle “①” = # of components

* – Optional equipment

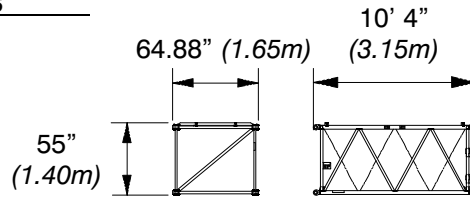
Luffing Jib Extensions

60 in (1.52m) x 50 in (1.27m)

Extensions With Pendants

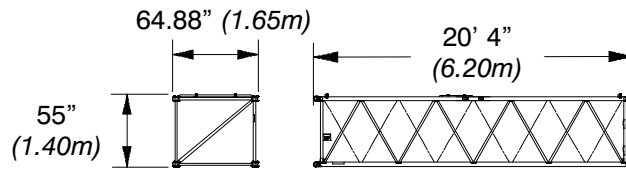
10 ft (3.05m) Extension

Weight: 858 lb (389kg)



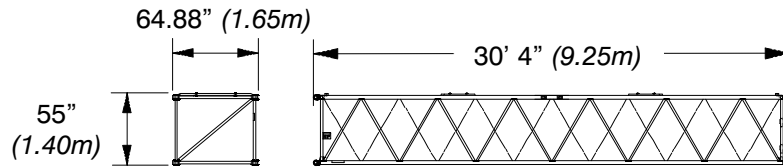
20 ft (6.10m) Extension

Weight: 1,376 lb (624kg)



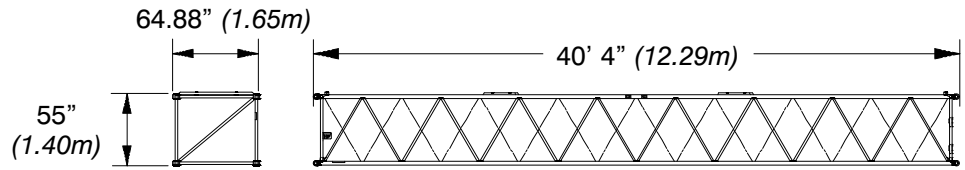
30 ft (9.14m) Extension

Weight: 1,895 lb (860kg)



40 ft (12.19m) Extension

Weight: 2,409 lb (1 093kg)



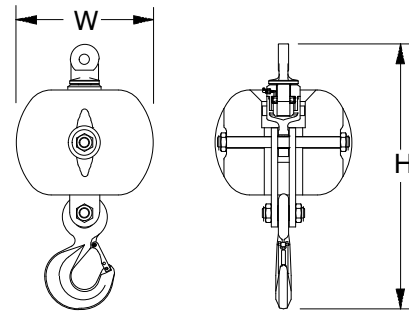
Number inside black circle "①" = # of components

* – Optional equipment

Hook Balls

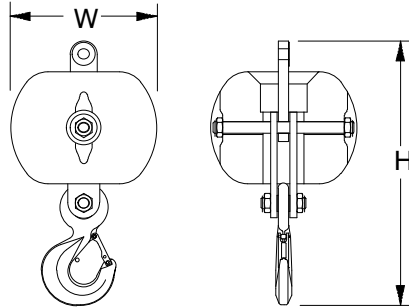
20 Ton (18.1mt) Swivel Hook Ball* ❶

Width	21.75 in	(0.55m)
Height	41.75 in	(1.06m)
Weight	1,255 lb	(569kg)



20 Ton (18.1mt) Non-Swivel Hook Ball* ❶

Width	21.75 in	(0.55m)
Height	39 in	(0.99m)
Weight	1,211 lb	(549kg)

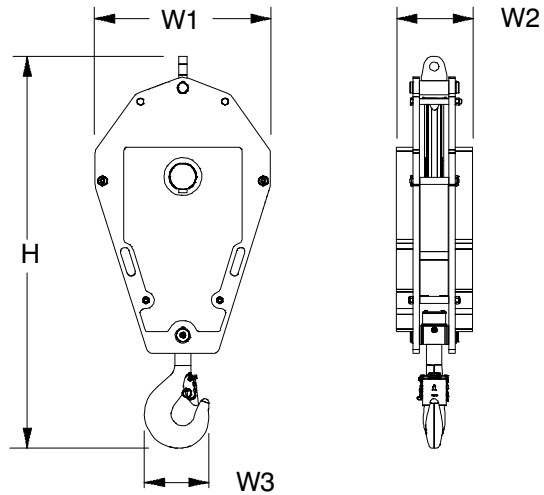


Hook Blocks

40 Ton (36.3mt)

1–Sheave Hook Block* ❶

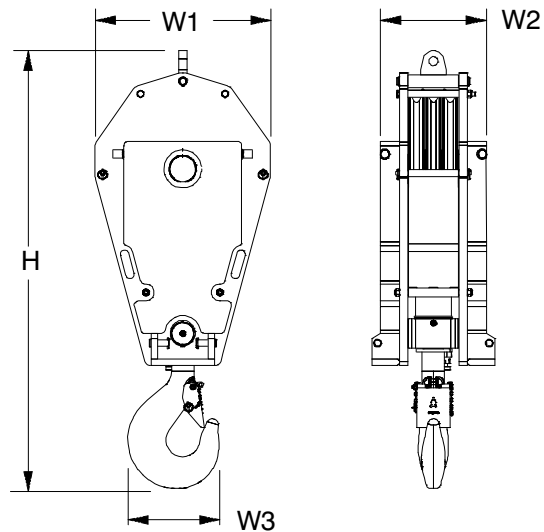
Width1	32.69 in	(0.83m)
Width2	14.19 in	(0.36m)
Width3	12.0 in	(0.30m)
Height	72.63 in	(1.84m)
Weight	2,274 lb	(1 031kg)



90 Ton (81.6mt)

3–Sheave Hook Block* ❶

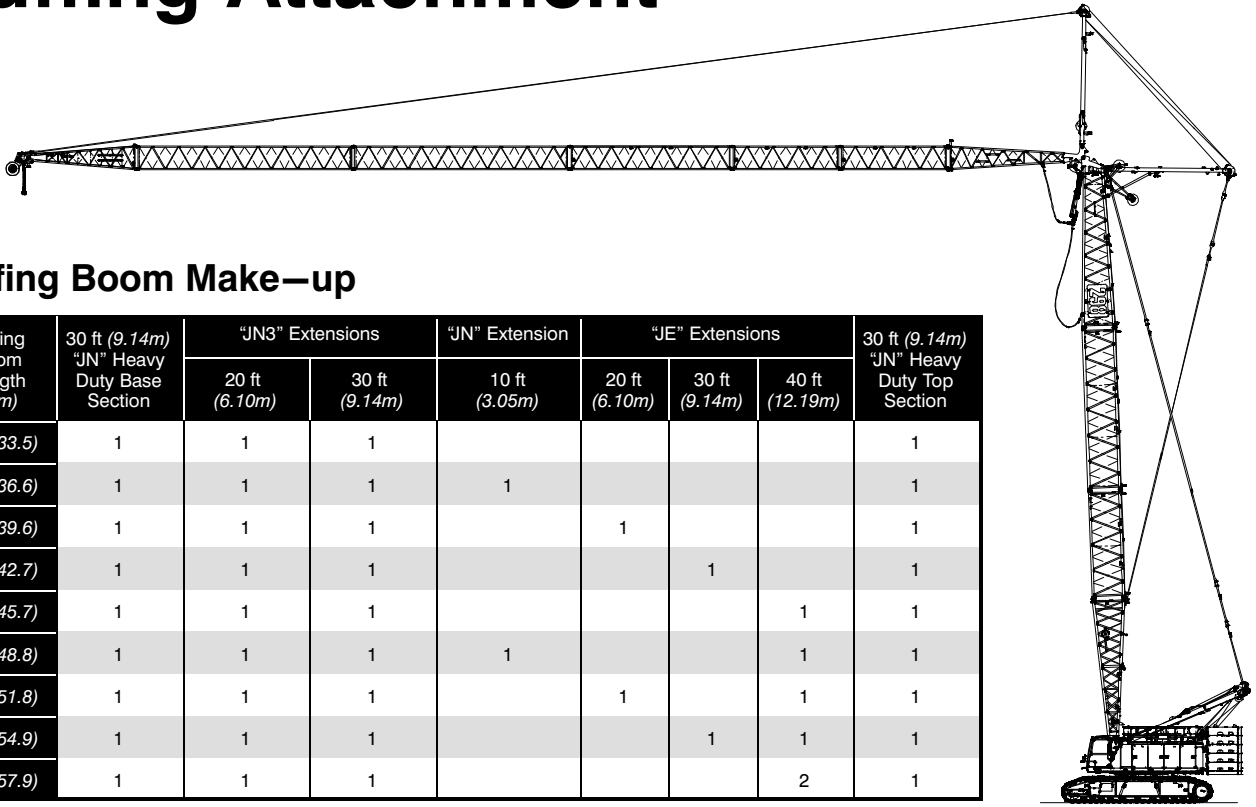
Width1	32.69 in	(0.83m)
Width2	19.75 in	(0.50m)
Width3	17.0 in	(0.43m)
Height	82.06 in	(2.08m)
Weight	3,611 lb	(1 031kg)



Number inside black circle “❶” = # of components

* – Optional equipment

Luffing Attachment



Luffing Boom Make-up

Luffing Boom Length ft (m)	30 ft (9.14m) "JN" Heavy Duty Base Section	"JN3" Extensions		"JN" Extension	"JE" Extensions			30 ft (9.14m) "JN" Heavy Duty Top Section
		20 ft (6.10m)	30 ft (9.14m)	10 ft (3.05m)	20 ft (6.10m)	30 ft (9.14m)	40 ft (12.19m)	
110 (33.5)	1	1	1					1
120 (36.6)	1	1	1	1				1
130 (39.6)	1	1	1		1			1
140 (42.7)	1	1	1			1		1
150 (45.7)	1	1	1				1	1
160 (48.8)	1	1	1	1			1	1
170 (51.8)	1	1	1		1		1	1
180 (54.9)	1	1	1			1	1	1
190 (57.9)	1	1	1				2	1

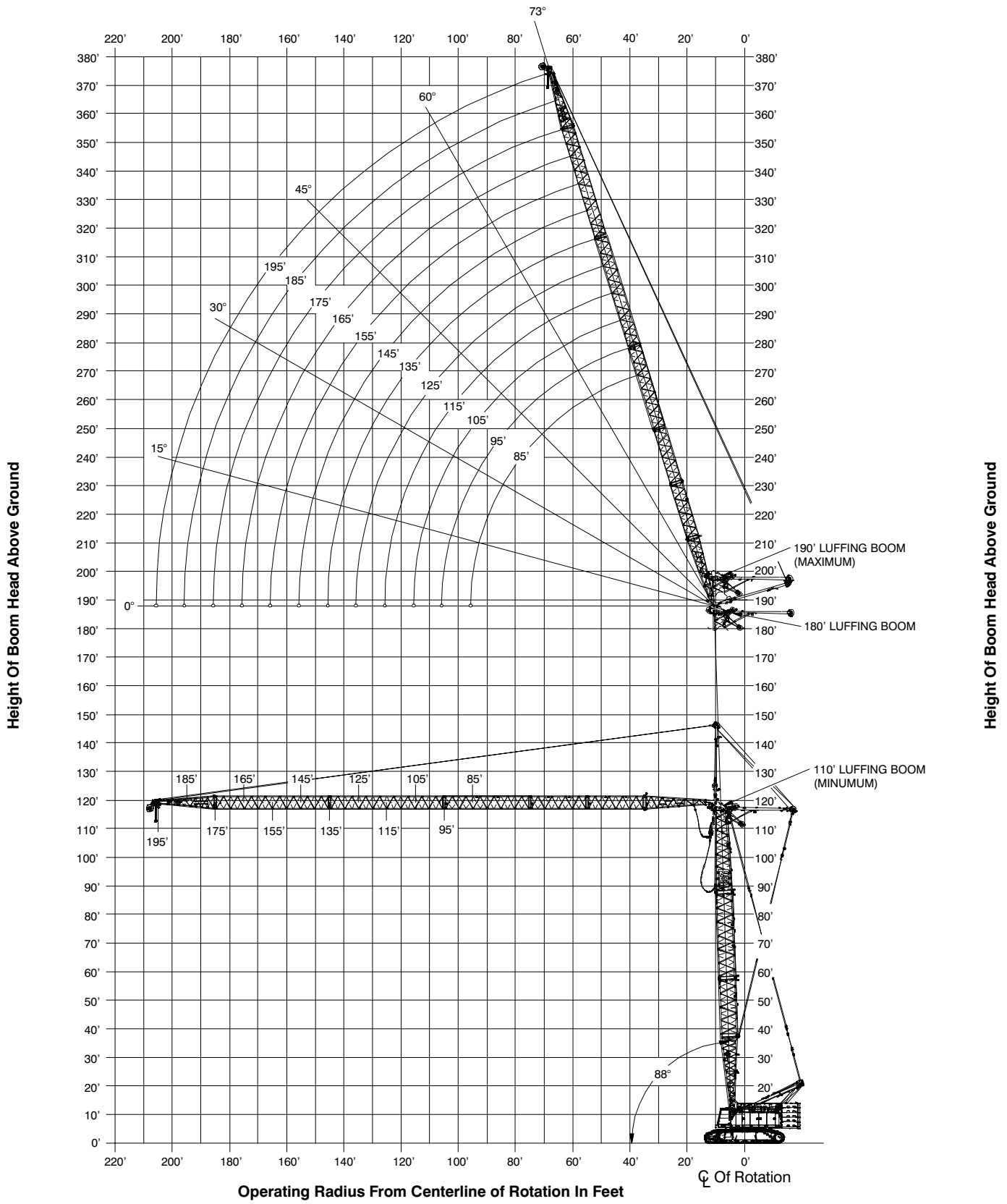
Luffing Jib Make-up

Luffing Jib Length ft (m)	20 ft (6.14m) "F" Base Section	"HP" Luffing Jib Extensions				20 ft (6.14m) "F" Top Section
		10 ft (3.05m)	20 ft (6.14m)	30 ft (9.10m)	40 ft (12.19m)	
85 (25.9)	1				1	1
95 (28.9)	1	1			1	1
105 (32.0)	1		1		1	1
115 (35.1)	1			1	1	1
125 (38.1)	1				2	1
135 (41.1)	1	1			2	1
145 (44.2)	1		1		2	1
155 (47.2)	1			1	2	1
165 (50.3)	1		2		2	1
175 (53.3)	1		1	1	2	1
185 (56.4)	1	1	1	1	2	1
195 (59.4)	1		2	1	2	1

Notes:

- Capacities shown are in kips/metric tons (1 kip = 1,000 lb / 1 metric ton = 0.45 kips) and are not more than 75% of the tipping loads with the crane standing level on a firm supporting surface. A deduction must be made from these capacities for the weight of the hook block, hook ball, sling, grapple, load weighing devices, etc. When lifting from the luffing jib with the fixed jib installed, reduce capacities by values shown in the Crane Rating Manual. See Operator's Manual for all limitations when raising or lowering attachment.
- The capacities in the shaded areas are based on structural strength. The capacities in the non-shaded areas are based on stability ratings.
- All luffing attachment combinations require the maximum counterweight combination "ABCDE+A".
- Load ratings are based on freely suspended loads and make no allowances for such factors as the effect of the wind on load, ground conditions, and operating speeds. The operator shall therefore reduce load ratings in order to take these conditions into account. Refer to the Crane Rating Manual for Wind Speed Restrictions.
- Refer to the Crane Rating Manual for allowable attachment liftoff lengths and allowable working lengths at the various luffing boom angles.
- The fixed jib has only one length [30 ft (9.14m)] and only one offset with respect to the luffing jib (5°).
- These capacities are in compliance with ASME/ANSI B30.5 at date of manufacture.
- These capacities apply only to the crane as originally manufactured and normally equipped by Link-Belt Construction Equipment Company.

* See Link-Belt® website, www.linkbelt.com, for complete luffing attachment working range details and capacities including fixed jib and midfall.



298 HSL Series 2 360° Capacities - Luffing Jib
68" x 80" Luffing Boom, 50" x 60" Luffing Jib, ABCDE + A Counterweight

Luffing Boom Length (ft)	Luffing Boom Length (m)	Luffing Jib Length (ft)	Luffing Jib Length (m)	Load Radius (ft)	Load Radius (m)	Luffing Boom Angle								Load Radius (ft)				
						88°				75°					65°			
						Jib Angle (deg)	Tip Height (ft)	Capacity (kips)	Capacity (mt)	Jib Angle (deg)	Tip Height (ft)	Capacity (kips)	Capacity (mt)		Jib Angle (deg)	Tip Height (ft)	Capacity (kips)	Capacity (mt)
110	33.5	85	25.9	50	15.2	62.13	192.5	74	67.1									50
110	33.5	85	25.9	70	21.3	45.33	177.9	47.6	43.2									70
110	33.5	85	25.9	90	27.4	20.22	146.8	34	30.8	49.48	177.9	52.3	47.4					90
110	33.5	85	25.9	110	33.5					27.7	152.8	36.6	33.2	47.28	169	39.2	35.6	110
110	33.5	85	25.9	130	39.6									24.4	141.5	31.9	28.9	130
110	33.5	125	38.1	50	15.2	71.35	235.9	72.4	65.7									50
110	33.5	125	38.1	70	21.3	61.44	227.2	46.6	42.3									70
110	33.5	125	38.1	90	27.4	50.35	213.7	33.2	30.1									90
110	33.5	125	38.1	110	33.5	37.05	192.7	26.1	23.7	52.98	213.1	35.3	32.0					110
110	33.5	125	38.1	130	39.6	16.63	153.2	20.5	18.6	40.35	194.2	27.7	25.1					130
110	33.5	125	38.1	150	45.7					22.74	161.6	21.8	19.8	38.81	184.7	25.5	23.1	150
110	33.5	125	38.1	170	51.8									20.05	149.3	21.3	19.3	170
110	33.5	195	59.4	70	21.3	72.09	303	29.1	26.4									70
110	33.5	195	59.4	90	27.4	65.84	295.3	23.9	21.7									90
110	33.5	195	59.4	110	33.5	59.22	284.9	19.1	17.3									110
110	33.5	195	59.4	130	39.6	52.1	271.3	15.1	13.7									130
110	33.5	195	59.4	150	45.7	44.2	253.4	11.8	10.7	53.75	270.6	16	14.5					150
110	33.5	195	59.4	170	51.8	34.97	229.2	8.7	7.9	46.07	253.7	12.7	11.5					170
110	33.5	195	59.4	190	57.9	22.78	192.9	5.6	5.1	37.21	231.2	9.9	9.0	45.18	244.7	12.2	11.1	190
110	33.5	195	59.4	210	64.0					25.97	198.7	7.7	7.0	36.16	221.4	9.7	8.8	210
110	33.5	195	59.4	230	70.0					0.33	114.4	6.3	5.7					230
110	33.5	195	59.4	230	70.1									24.5	187.2	7.6	6.9	230
140	42.7	85	25.9	50	15.2	63.05	223.1	76.3	69.2									50
140	42.7	85	25.9	70	21.3	46.45	209	48.7	44.2									70
140	42.7	85	25.9	90	27.4	22.43	179.8	34.4	31.2	55.83	212.7	51.4	46.6					90
140	42.7	85	25.9	110	33.5					37.66	194.1	40.5	36.7					110
140	42.7	85	25.9	130	39.6									40.13	188.6	29.4	26.7	130
140	42.7	85	25.9	150	45.9									0.57	134.3	24.8	22.5	150

This material is supplied for reference use only. Operator must refer to in-cab Crane Rating Manual and Operator's Manual to determine allowable crane lifting capacities and assembly and operating procedures.

298 HSL Series 2 360° Capacities - Luffing Jib																		
68" x 80" Luffing Boom, 50" x 60" Luffing Jib, ABCDE + A Counterweight																		
Luffing Boom Length (ft)	Luffing Boom Length (m)	Luffing Jib Length (ft)	Luffing Jib Length (m)	Load Radius (ft)	Load Radius (m)	Luffing Boom Angle												Load Radius (ft)
						88°				75°				65°				
						Jib Angle (deg)	Tip Height (ft)	Capacity (kips)	Capacity (mt)	Jib Angle (deg)	Tip Height (ft)	Capacity (kips)	Capacity (mt)	Jib Angle (deg)	Tip Height (ft)	Capacity (kips)	Capacity (mt)	
140	42.7	125	38.1	50	15.2	71.86	266.2	63.1	57.2								50	
140	42.7	125	38.1	70	21.3	62.06	257.8	47.6	43.2								70	
140	42.7	125	38.1	90	27.4	51.06	244.6	33.5	30.4								90	
140	42.7	125	38.1	110	33.5	37.95	224.2	26.6	24.1	57.19	247.4	39.2	35.6				110	
140	42.7	125	38.1	130	39.6	18.44	186.9	20.8	18.9	45.69	231.6	30.9	28.0				130	
140	42.7	125	38.1	150	45.7					30.84	206.3	23.8	21.6	47.16	225.4	23.6	21.4	150
140	42.7	125	38.1	170	51.8									33.23	202	20	18.1	170
140	42.7	125	38.1	190	58.0									0.65	134.9	17.2	15.6	190
140	42.7	195	59.4	70	21.3	72.41	333.3	28	25.4								70	
140	42.7	195	59.4	90	27.4	66.22	325.8	23.6	21.4								90	
140	42.7	195	59.4	110	33.5	59.62	315.6	19	17.2								110	
140	42.7	195	59.4	130	39.6	52.54	302.2	15	13.6								130	
140	42.7	195	59.4	150	45.7	44.7	284.5	11.9	10.8	56.46	304.9	17.2	15.6				150	
140	42.7	195	59.4	170	51.8	35.58	260.8	9.2	8.3	49.22	289.9	13.8	12.5				170	
140	42.7	195	59.4	190	57.9	23.66	225.6	7.1	6.4	40.91	269.9	10.9	9.9				190	
140	42.7	195	59.4	210	64.0					30.87	242.3	8.4	7.6	42.15	264.3	11.2	10.2	210
140	42.7	195	59.4	214	65.1												214	
140	42.7	195	59.4	230	70.1					16.08	196.2	6.6	6.0	32.44	238.1	8.8	8.0	230
140	42.7	195	59.4	250	76.2									18.82	196.4	6.9	6.3	250
170	51.8	85	25.9	50	15.2	64	253.7	69.8	63.3								50	
170	51.8	85	25.9	70	21.3	47.58	240.1	49.8	45.2								70	
170	51.8	85	25.9	90	27.4	24.51	212.6	35.1	31.8								90	
170	51.8	85	25.9	110	33.5					45.73	232	38.5	34.9				110	
170	51.8	85	25.9	130	39.6					21.04	201.6	31.3	28.4				130	
170	51.8	85	25.9	150	45.7									32.48	206.2	22.4	20.3	150
170	51.8	125	38.1	50	15.2	72.36	296.5	51	46.3								50	
170	51.8	125	38.1	70	21.3	62.7	288.4	43.4	39.4								70	
170	51.8	125	38.1	90	27.4	51.78	275.5	33.7	30.6								90	
170	51.8	125	38.1	110	33.5	38.86	255.8	26.9	24.4								110	
170	51.8	125	38.1	130	39.6	20.15	220.4	21	19.1	50.61	267.7	30	27.2				130	
170	51.8	125	38.1	150	45.7					37.4	247	25	22.7				150	
170	51.8	125	38.1	170	51.8					17.32	208.3	20.6	18.7	42.82	245.5	17.8	16.1	170
170	51.8	125	38.1	190	57.9									26.69	216.7	15.2	13.8	190

This material is supplied for reference use only. Operator must refer to in-cab Crane Rating Manual and Operator's Manual to determine allowable crane lifting capacities and assembly and operating procedures.

298 HSL Series 2 360° Capacities - Luffing Jib																		
68" x 80" Luffing Boom, 50" x 60" Luffing Jib, ABCDE + A Counterweight																		
Luffing Boom Length (ft)	Luffing Boom Length (m)	Luffing Jib Length (ft)	Luffing Jib Length (m)	Load Radius (ft)	Load Radius (m)	Luffing Boom Angle												Load Radius (ft)
						88°				75°				65°				
						Jib Angle (deg)	Tip Height (ft)	Capacity (kips)	Capacity (mt)	Jib Angle (deg)	Tip Height (ft)	Capacity (kips)	Capacity (mt)	Jib Angle (deg)	Tip Height (ft)	Capacity (kips)	Capacity (mt)	
170	51.8	195	59.4	70	21.3	72.73	363.6	24.4	22.1								70	
170	51.8	195	59.4	90	27.4	66.6	356.3	22.2	20.1								90	
170	51.8	195	59.4	110	33.5	60.03	346.3	18.5	16.8								110	
170	51.8	195	59.4	130	39.6	52.98	333	14.9	13.5								130	
170	51.8	195	59.4	150	45.7	45.21	315.7	11.7	10.6	59.16	338.8	18.2	16.5				150	
170	51.8	195	59.4	170	51.8	36.19	292.5	9.1	8.3	52.26	325.3	14.8	13.4				170	
170	51.8	195	59.4	190	57.9	24.54	258.3	7	6.4	44.38	307.5	11.8	10.7				190	
170	51.8	195	59.4	210	64.0					35.19	283.5	9.2	8.3	47.27	304.2	10.4	9.4	210
170	51.8	195	59.4	230	70.1					23.1	247.6	7.1	6.4	38.96	283.1	8.6	7.8	230
170	51.8	195	59.4	250	76.2									28.34	253.1	7.2	6.5	250
170	51.8	195	59.4	270	82.3									10.68	196.6	6.1	5.5	270
190	57.9	85	25.9	50	15.2	64.58	274.1	57.5	52.2								50	
190	57.9	85	25.9	70	21.3	48.35	260.8	45	40.8								70	
190	57.9	85	25.9	90	27.4	25.84	234.4	35.4	32.1								90	
190	57.9	85	25.9	110	33.5					50.55	256	37	33.6				110	
190	57.9	85	25.9	130	39.6					29.46	232.2	30	27.2				130	
190	57.9	85	25.9	150	45.7									41.3	235.2	20.6	18.7	150
190	57.9	85	25.9	170	51.8									12.12	196.5	17.4	15.8	170
190	57.9	125	38.1	50	15.2	72.7	316.8	44.1	40.0								50	
190	57.9	125	38.1	70	21.3	63.12	308.8	37.1	33.7								70	
190	57.9	125	38.1	90	27.4	52.28	296.2	29.3	26.6								90	
190	57.9	125	38.1	110	33.5	39.47	276.8	24.6	22.3								110	
190	57.9	125	38.1	130	39.6	21.24	242.6	21.1	19.1	53.71	291.1	28.7	26.0				130	
190	57.9	125	38.1	150	45.7					41.25	272.8	24.3	22.0				150	
190	57.9	125	38.1	170	51.8					24.25	241.7	20.6	18.7	47.86	271.8	15.9	14.4	170
190	57.9	125	38.1	190	57.9									34.45	249.3	13.3	12.1	190
190	57.9	125	38.1	210	64.0									10.08	200.5	11.4	10.3	210
190	57.9	155	47.2	70	21.3	68.58	341.6	29.6	26.9								70	
190	57.9	155	47.2	90	27.4	60.41	332.1	25.6	23.2								90	
190	57.9	155	47.2	110	33.5	51.49	318.6	22	20.0								110	
190	57.9	155	47.2	130	39.6	41.27	299.5	18.9	17.1								130	
190	57.9	155	47.2	150	45.7	28.28	270.7	15.9	14.4	52.69	313.6	23.3	21.1				150	
190	57.9	155	47.2	170	51.8					42.68	295.4	19.7	17.9				170	
190	57.9	155	47.2	190	57.9					30.21	268.3	16.5	15.0	47.93	294.2	12.1	11.0	190
190	57.9	155	47.2	210	64.0					6.66	208.3	13.4	12.2	37.45	272.8	10	9.1	210
190	57.9	155	47.2	230	70.1									22.65	238.3	8.5	7.7	230

This material is supplied for reference use only. Operator must refer to in-cab Crane Rating Manual and Operator's Manual to determine allowable crane lifting capacities and assembly and operating procedures.

298 HSL Series 2 Over End Blocked Capacities - Luffing Jib
 68" x 80" Luffing Boom, 50" x 60" Luffing Jib, ABCDE + A Counterweight

Luffing Boom Length (ft)	Luffing Boom Length (m)	Luffing Jib Length (ft)	Luffing Jib Length (m)	Load Radius (ft)	Load Radius (m)	Luffing Boom Angle								Load Radius (ft)				
						88°				75°					65°			
						Jib Angle (deg)	Tip Height (ft)	Capacity (kips)	Capacity (mt)	Jib Angle (deg)	Tip Height (ft)	Capacity (kips)	Capacity (mt)		Jib Angle (deg)	Tip Height (ft)	Capacity (kips)	Capacity (mt)
110	33.5	85	25.9	50	15.2	62.13	192.5	74	67.1									50
110	33.5	85	25.9	70	21.3	45.33	177.9	47.6	43.2									70
110	33.5	85	25.9	90	27.4	20.22	146.8	34	30.8	49.48	177.9	52.3	47.4					90
110	33.5	85	25.9	110	33.5					27.7	152.8	36.6	33.2	47.28	169	44.1	40.0	110
110	33.5	85	25.9	130	39.6									24.4	141.5	35.6	32.3	130
110	33.5	125	38.1	50	15.2	71.35	235.9	72.4	65.7									50
110	33.5	125	38.1	70	21.3	61.44	227.2	46.6	42.3									70
110	33.5	125	38.1	90	27.4	50.35	213.7	33.2	30.1									90
110	33.5	125	38.1	110	33.5	37.05	192.7	26.1	23.7	52.98	213.1	35.3	32.0					110
110	33.5	125	38.1	130	39.6	16.63	153.2	20.5	18.6	40.35	194.2	27.7	25.1					130
110	33.5	125	38.1	150	45.7					22.74	161.6	21.8	19.8	38.81	184.7	27	24.5	150
110	33.5	125	38.1	170	51.8									20.05	149.3	21.3	19.3	170
110	33.5	195	59.4	70	21.3	72.09	303	29.1	26.4									70
110	33.5	195	59.4	90	27.4	65.84	295.3	23.9	21.7									90
110	33.5	195	59.4	110	33.5	59.22	284.9	19.1	17.3									110
110	33.5	195	59.4	130	39.6	52.1	271.3	15.1	13.7									130
110	33.5	195	59.4	150	45.7	44.2	253.4	11.8	10.7	53.75	270.6	16	14.5					150
110	33.5	195	59.4	170	51.8	34.97	229.2	8.7	7.9	46.07	253.7	12.7	11.5					170
110	33.5	195	59.4	190	57.9	22.78	192.9	5.6	5.1	37.21	231.2	9.9	9.0	45.18	244.7	12.2	11.1	190
110	33.5	195	59.4	210	64.0					25.97	198.7	7.7	7.0	36.16	221.4	9.7	8.8	210
110	33.5	195	59.4	230	70.0					0.33	114.4	6.3	5.7					230
110	33.5	195	59.4	230	70.1									24.5	187.2	7.6	6.9	230
140	42.7	85	25.9	50	15.2	63.05	223.1	76.3	69.2									50
140	42.7	85	25.9	70	21.3	46.45	209	48.7	44.2									70
140	42.7	85	25.9	90	27.4	22.43	179.8	34.4	31.2	55.83	212.7	56.8	51.5					90
140	42.7	85	25.9	110	33.5					37.66	194.1	41.6	37.7					110
140	42.7	85	25.9	130	39.6									40.13	188.6	33.3	30.2	130
140	42.7	85	25.9	150	45.9									0.57	134.3	27.6	25.0	150

This material is supplied for reference use only. Operator must refer to in-cab Crane Rating Manual and Operator's Manual to determine allowable crane lifting capacities and assembly and operating procedures.

298 HSL Series 2 Over End Blocked Capacities - Luffing Jib
 68" x 80" Luffing Boom, 50" x 60" Luffing Jib, ABCDE + A Counterweight

Luffing Boom Length (ft)	Luffing Boom Length (m)	Luffing Jib Length (ft)	Luffing Jib Length (m)	Load Radius (ft)	Load Radius (m)	Luffing Boom Angle								Load Radius (ft)				
						88°				75°					65°			
						Jib Angle (deg)	Tip Height (ft)	Capacity (kips)	Capacity (mt)	Jib Angle (deg)	Tip Height (ft)	Capacity (kips)	Capacity (mt)		Jib Angle (deg)	Tip Height (ft)	Capacity (kips)	Capacity (mt)
140	42.7	125	38.1	50	15.2	71.86	266.2	63.1	57.2									50
140	42.7	125	38.1	70	21.3	62.06	257.8	47.6	43.2									70
140	42.7	125	38.1	90	27.4	51.06	244.6	33.5	30.4									90
140	42.7	125	38.1	110	33.5	37.95	224.2	26.6	24.1	57.19	247.4	40.3	36.6					110
140	42.7	125	38.1	130	39.6	18.44	186.9	20.8	18.9	45.69	231.6	30.9	28.0					130
140	42.7	125	38.1	150	45.7					30.84	206.3	23.8	21.6	47.16	225.4	26	23.6	150
140	42.7	125	38.1	170	51.8									33.23	202	21.9	19.9	170
140	42.7	125	38.1	190	58.0									0.65	134.9	18.8	17.1	190
140	42.7	195	59.4	70	21.3	72.41	333.3	28	25.4									70
140	42.7	195	59.4	90	27.4	66.22	325.8	23.6	21.4									90
140	42.7	195	59.4	110	33.5	59.62	315.6	19	17.2									110
140	42.7	195	59.4	130	39.6	52.54	302.2	15	13.6									130
140	42.7	195	59.4	150	45.7	44.7	284.5	11.9	10.8	56.46	304.9	17.2	15.6					150
140	42.7	195	59.4	170	51.8	35.58	260.8	9.2	8.3	49.22	289.9	13.8	12.5					170
140	42.7	195	59.4	190	57.9	23.66	225.6	7.1	6.4	40.91	269.9	10.9	9.9					190
140	42.7	195	59.4	210	64.0					30.87	242.3	8.4	7.6	42.15	264.3	11.2	10.2	210
140	42.7	195	59.4	230	70.1					16.08	196.2	6.6	6.0	32.44	238.1	8.8	8.0	230
140	42.7	195	59.4	250	76.2									18.82	196.4	6.9	6.3	250
170	51.8	85	25.9	50	15.2	64	253.7	69.8	63.3									50
170	51.8	85	25.9	70	21.3	47.58	240.1	49.8	45.2									70
170	51.8	85	25.9	90	27.4	24.51	212.6	35.1	31.8									90
170	51.8	85	25.9	110	33.5					45.73	232	41	37.2					110
170	51.8	85	25.9	130	39.6					21.04	201.6	33.8	30.7					130
170	51.8	85	25.9	150	45.7									32.48	206.2	23.8	21.6	150
170	51.8	125	38.1	50	15.2	72.36	296.5	51	46.3									50
170	51.8	125	38.1	70	21.3	62.7	288.4	43.4	39.4									70
170	51.8	125	38.1	90	27.4	51.78	275.5	33.7	30.6									90
170	51.8	125	38.1	110	33.5	38.86	255.8	26.9	24.4									110
170	51.8	125	38.1	130	39.6	20.15	220.4	21	19.1	50.61	267.7	33	29.9					130
170	51.8	125	38.1	150	45.7					37.4	247	26.2	23.8					150
170	51.8	125	38.1	170	51.8					17.32	208.3	20.6	18.7	42.82	245.5	18.4	16.7	170
170	51.8	125	38.1	190	57.9									26.69	216.7	15.7	14.2	190

This material is supplied for reference use only. Operator must refer to in-cab Crane Rating Manual and Operator's Manual to determine allowable crane lifting capacities and assembly and operating procedures.

298 HSL Series 2 Over End Blocked Capacities - Luffing Jib
 68" x 80" Luffing Boom, 50" x 60" Luffing Jib, ABCDE + A Counterweight

Luffing Boom Length (ft)	Luffing Boom Length (m)	Luffing Jib Length (ft)	Luffing Jib Length (m)	Load Radius (ft)	Load Radius (m)	Luffing Boom Angle								Load Radius (ft)				
						88°				75°					65°			
						Jib Angle (deg)	Tip Height (ft)	Capacity (kips)	Capacity (mt)	Jib Angle (deg)	Tip Height (ft)	Capacity (kips)	Capacity (mt)		Jib Angle (deg)	Tip Height (ft)	Capacity (kips)	Capacity (mt)
170	51.8	195	59.4	70	21.3	72.73	363.6	24.4	22.1									70
170	51.8	195	59.4	90	27.4	66.6	356.3	22.2	20.1									90
170	51.8	195	59.4	110	33.5	60.03	346.3	18.5	16.8									110
170	51.8	195	59.4	130	39.6	52.98	333	14.9	13.5									130
170	51.8	195	59.4	150	45.7	45.21	315.7	11.7	10.6	59.16	338.8	18.2	16.5					150
170	51.8	195	59.4	170	51.8	36.19	292.5	9.1	8.3	52.26	325.3	14.8	13.4					170
170	51.8	195	59.4	190	57.9	24.54	258.3	7	6.4	44.38	307.5	11.8	10.7					190
170	51.8	195	59.4	210	64.0					35.19	283.5	9.2	8.3	47.27	304.2	10.4	9.4	210
170	51.8	195	59.4	230	70.1					23.1	247.6	7.1	6.4	38.96	283.1	8.6	7.8	230
170	51.8	195	59.4	250	76.2									28.34	253.1	7.2	6.5	250
170	51.8	195	59.4	270	82.3									10.68	196.6	6.1	5.5	270
190	57.9	85	25.9	50	15.2	64.58	274.1	57.5	52.2									50
190	57.9	85	25.9	70	21.3	48.35	260.8	45	40.8									70
190	57.9	85	25.9	90	27.4	25.84	234.4	35.4	32.1									90
190	57.9	85	25.9	110	33.5					50.55	256	38.6	35.0					110
190	57.9	85	25.9	130	39.6					29.46	232.2	33	29.9					130
190	57.9	85	25.9	150	45.7									41.3	235.2	21.1	19.1	150
190	57.9	85	25.9	170	51.8									12.12	196.5	17.7	16.1	170
190	57.9	125	38.1	50	15.2	72.7	316.8	44.1	40.0									50
190	57.9	125	38.1	70	21.3	63.12	308.8	37.1	33.7									70
190	57.9	125	38.1	90	27.4	52.28	296.2	29.3	26.6									90
190	57.9	125	38.1	110	33.5	39.47	276.8	24.6	22.3									110
190	57.9	125	38.1	130	39.6	21.24	242.6	21.1	19.1	53.71	291.1	31.2	28.3					130
190	57.9	125	38.1	150	45.7					41.25	272.8	25.8	23.4					150
190	57.9	125	38.1	170	51.8					24.25	241.7	21.8	19.8	47.86	271.8	15.9	14.4	170
190	57.9	125	38.1	190	57.9									34.45	249.3	13.3	12.1	190
190	57.9	125	38.1	210	64.0									10.08	200.5	11.4	10.3	210
190	57.9	155	47.2	70	21.3	68.58	341.6	29.6	26.9									70
190	57.9	155	47.2	90	27.4	60.41	332.1	25.6	23.2									90
190	57.9	155	47.2	110	33.5	51.49	318.6	22	20.0									110
190	57.9	155	47.2	130	39.6	41.27	299.5	18.9	17.1									130
190	57.9	155	47.2	150	45.7	28.28	270.7	15.9	14.4	52.69	313.6	24.3	22.0					150
190	57.9	155	47.2	170	51.8					42.68	295.4	20.5	18.6					170
190	57.9	155	47.2	190	57.9					30.21	268.3	16.5	15.0	47.93	294.2	12.1	11.0	190
190	57.9	155	47.2	210	64.0					6.66	208.3	13.4	12.2	37.45	272.8	10	9.1	210
190	57.9	155	47.2	230	70.1									22.65	238.3	8.5	7.7	230

This material is supplied for reference use only. Operator must refer to in-cab Crane Rating Manual and Operator's Manual to determine allowable crane lifting capacities and assembly and operating procedures.

298 HSL Series 2 360° Capacities - Luffing Jib + Fixed Jib
68" X 80" Luffing Boom, 50" X 60" Luffing Jib, 30" x 36" Fixed Jib, ABCDE+A Counterweight

Luffing Boom Length (ft)	Luffing Boom Length (m)	Luffing Jib Length (ft)	Luffing Jib Length (m)	Load Radius (ft)	Load Radius (m)	88°				75°				65°				Load Radius (ft)		
						Jib Angle (°)	Tip Height (ft)	Capacity (kips)	Capacity (mt)	Jib Angle (°)	Tip Height (ft)	Capacity (kips)	Capacity (mt)	Jib Angle (°)	Tip Height (ft)	Capacity (kips)	Capacity (mt)			
110	33.5	85	25.9	50	15.2	71.6	229.8	41.9	19.0	*										50
110	33.5	85	25.9	70	21.3	61	220.5	32.4	14.7	*										70
110	33.5	85	25.9	90	27.4	49	205.8	25.6	11.6	*										90
110	33.5	85	25.9	110	33.5	34	182.2	21.2	9.6	*	51.9	205.7	27	12.2	*					110
110	33.5	85	25.9	130	39.6						37.9	184.7	22.2	10.1	*					130
110	33.5	85	25.9	150	45.7						15.1	142.2	19.2	8.7	*	36.1	175	21.9	9.9	* 150
110	33.5	85	25.9	170	51.8											9.9	124.9	19.1	8.7	* 170
110	33.5	125	38.1	70	21.3	68.8	265	34.7	15.7	*										70
110	33.5	125	38.1	90	27.4	60.7	255.2	29.2	13.2	*										90
110	33.5	125	38.1	110	33.5	51.9	241.3	24.7	11.2	*										110
110	33.5	125	38.1	130	39.6	41.9	222	21.2	9.6	*	54	240.8	25.6	11.6	*					130
110	33.5	125	38.1	150	45.7	29.1	193	16.6	7.5	*	44.3	223	22.2	10.1	*					150
110	33.5	125	38.1	170	51.8						32.5	196.9	17.8	8.1	*	43.2	213.9	19.7	8.9	170
110	33.5	125	38.1	190	57.9						12.9	146.7	13.4	6.1	*	31	186.5	16.8	7.6	190
110	33.5	125	38.1	210	64.0											8.4	127.6	12	5.4	* 210
110	33.5	195	59.4	90	27.4	70.2	332.3	23	10.4	*										90
110	33.5	195	59.4	110	33.5	64.8	323.8	18.4	8.3	*										110
110	33.5	195	59.4	130	39.6	59	312.8	14	6.4	*										130
110	33.5	195	59.4	150	45.7	52.9	298.9	10.2	4.6	*										150
110	33.5	195	59.4	170	51.8	46.3	281.5	7.1	3.2	*	54.4	298.3	10.9	4.9	*					170
110	33.5	195	59.4	190	57.9	38.8	259.2	4.5	2.0	*	47.9	281.8	7.7	3.5	*					190
110	33.5	195	59.4	210	64.0	29.7	229.2	2.3	1.0	*	40.6	260.8	5	2.3	*	47.2	273	7.2	3.3	* 210
110	33.5	195	59.4	230	70.1						32	232.9	2.8	1.3	*	39.8	251.4	4.7	2.1	* 230
110	33.5	195	59.4	250	76.2											31	222.6	2.5	1.1	* 250
140	42.7	85	25.9	50	15.2	72.1	260.2	41.9	19.0	*										50
140	42.7	85	25.9	70	21.3	61.5	251.1	32.5	14.7	*										70
140	42.7	85	25.9	80	24.4	55.8	244.7	28.6	13.0	*										80
140	42.7	85	25.9	90	27.4	49.6	236.7	25.6	11.6	*										90
140	42.7	85	25.9	110	33.5	34.9	213.8	21.2	9.6	*	56.6	240.5	28.9	13.1	*					110
140	42.7	85	25.9	130	39.6						43.7	223.1	23.5	10.7	*					130
140	42.7	85	25.9	150	45.7						26.3	193.2	19.9	9.0	*	45.7	217.4	22.5	10.2	150
140	42.7	85	25.9	170	51.8											29.4	190.2	19	8.6	170

This material is supplied for reference use only. Operator must refer to in-cab Crane Rating Manual and Operator's Manual to determine allowable crane lifting capacities and assembly and operating procedures.

298 HSL Series 2 360° Capacities - Luffing Jib + Fixed Jib
68" X 80" Luffing Boom, 50" X 60" Luffing Jib, 30" x 36" Fixed Jib, ABCDE+A Counterweight

Luffing Boom Length (ft)	Luffing Boom Length (m)	Luffing Jib Length (ft)	Luffing Jib Length (m)	Load Radius (ft)	Load Radius (m)	88°				75°				65°				Load Radius (ft)		
						Jib Angle (°)	Tip Height (ft)	Capacity (kips)	Capacity (mt)	Jib Angle (°)	Tip Height (ft)	Capacity (kips)	Capacity (mt)	Jib Angle (°)	Tip Height (ft)	Capacity (kips)	Capacity (mt)			
140	42.7	125	38.1	70	21.3	69.2	295.4	34.4	15.6	*										70
140	42.7	125	38.1	110	33.5	52.4	272.2	24.5	11.1	*										110
140	42.7	125	38.1	130	39.6	42.5	253.2	21.3	9.7	*	57.5	275.3	26.7	12.1	*					130
140	42.7	125	38.1	150	45.7	29.9	224.9	16.8	7.6	*	48.3	259.6	23.1	10.5	*					150
140	42.7	125	38.1	170	51.8						37.5	237.4	19.4	8.8	*	49.7	253.5	17.5	7.9	170
140	42.7	125	38.1	190	57.9						22.6	201.4	13.5	6.1	*	39.1	232.4	14.9	6.8	190
140	42.7	125	38.1	210	64.0											25.2	199.4	12.7	5.8	210
140	42.7	195	59.4	90	27.4	70.5	362.7	20.1	9.1	*										90
140	42.7	195	59.4	110	33.5	65	354.2	17.2	7.8	*										110
140	42.7	195	59.4	130	39.6	59.3	343.4	13.5	6.1	*										130
140	42.7	195	59.4	150	45.7	53.3	329.7	9.9	4.5	*										150
140	42.7	195	59.4	170	51.8	46.7	312.5	6.9	3.1	*	56.8	332.7	11.7	5.3	*					170
140	42.7	195	59.4	190	57.9	39.2	290.5	4.3	2.0	*	50.5	317.7	8.4	3.8	*					190
140	42.7	195	59.4	210	64.0	30.3	261	2.1	1.0	*	43.6	298.6	5.7	2.6	*					210
140	42.7	195	59.4	230	70.1						35.6	273.8	3.3	1.5	*	44.6	292.9	6	2.7	* 230
140	42.7	195	59.4	250	76.2											36.8	269.1	3.6	1.6	* 250
170	51.8	85	25.9	50	15.2	72.7	290.5	41.7	18.9	*										50
170	51.8	85	25.9	70	21.3	62.1	281.7	32.4	14.7	*										70
170	51.8	85	25.9	90	27.4	50.3	267.7	25.6	11.6	*										90
170	51.8	85	25.9	110	33.5	35.8	245.3	21.1	9.6	*										110
170	51.8	85	25.9	130	39.6	8.5	192.9	18.5	8.4	*	49	259.8	25.1	11.4	*					130
170	51.8	85	25.9	150	45.7						34.1	236.2	20.8	9.4	*					150
170	51.8	85	25.9	170	51.8											40.4	236.4	16.6	7.5	170
170	51.8	85	25.9	190	57.9											20.6	200.7	13.9	6.3	* 190
170	51.8	125	38.1	70	21.3	69.6	325.8	33.8	15.3	*										70
170	51.8	125	38.1	90	27.4	61.6	316.3	28.7	13.0	*										90
170	51.8	125	38.1	110	33.5	52.9	303	24.3	11.0	*										110
170	51.8	125	38.1	130	39.6	43	284.3	18.9	8.6	*										130
170	51.8	125	38.1	150	45.7	30.7	256.7	14.3	6.5	*	52	295.3	23.2	10.5						150
170	51.8	125	38.1	170	51.8	7.2	195.2	11.2	5.1	*	41.9	276	19.5	8.8						170
170	51.8	125	38.1	190	57.9						29.2	247.1	13.4	6.1	*	46	273.9	11.6	5.3	* 190
170	51.8	125	38.1	210	64.0											34.6	249.5	9.5	4.3	* 210
170	51.8	125	38.1	230	70.1											17.6	207	7.8	3.5	* 230

This material is supplied for reference use only. Operator must refer to in-cab Crane Rating Manual and Operator's Manual to determine allowable crane lifting capacities and assembly and operating procedures.

298 HSL Series 2 360° Capacities - Luffing Jib + Fixed Jib
68" X 80" Luffing Boom, 50" X 60" Luffing Jib, 30" x 36" Fixed Jib, ABCDE+A Counterweight

Luffing Boom Length (ft)	Luffing Boom Length (m)	Luffing Jib Length (ft)	Luffing Jib Length (m)	Load Radius (ft)	Load Radius (m)	88°				75°				65°				Load Radius (ft)			
						Jib Angle (°)	Tip Height (ft)	Capacity (kips)	Capacity (mt)	Jib Angle (°)	Tip Height (ft)	Capacity (kips)	Capacity (mt)	Jib Angle (°)	Tip Height (ft)	Capacity (kips)	Capacity (mt)				
170	51.8	175	53.3	90	27.4	68.8	371.6	21	9.5	*										90	
170	51.8	175	53.3	110	33.5	62.8	362.4	17.4	7.9	*										110	
170	51.8	175	53.3	130	39.6	56.4	350.3	13.7	6.2	*										130	
170	51.8	175	53.3	150	45.7	49.4	334.7	10.4	4.7	*										150	
170	51.8	175	53.3	170	51.8	41.6	314.6	7.7	3.5	*	55.7	342.8	13.7	6.2	*					170	
170	51.8	175	53.3	190	57.9	32.3	287.3	5.6	2.5	*	48.7	326.9	12.2	5.5	*					190	
170	51.8	175	53.3	210	64.0	19.3	244.6	4.1	1.9	*	40.8	306.2	9.1	4.1	*					210	
170	51.8	175	53.3	230	70.1						31.2	277.9	5.4	2.4	*	44	304.4	5.2	2.4	*	230
170	51.8	175	53.3	250	76.2						17.6	232.3	2.9	1.3	*	35.2	279.6	3.9	1.8	*	250
170	51.8	175	53.3	270	82.3											23.8	243.2	2.8	1.3	*	270
190	57.9	85	25.9	50	15.2	73	310.7	41.3	18.7	*											50
190	57.9	85	25.9	70	21.3	62.5	302.1	32.3	14.7	*											70
190	57.9	85	25.9	90	27.4	50.8	288.2	25.5	11.6	*											90
190	57.9	85	25.9	110	33.5	36.4	266.3	21.1	9.6	*											110
190	57.9	85	25.9	130	39.6	10.8	217.6	18.3	8.3	*	52.3	283.6	26.1	11.8	*						130
190	57.9	85	25.9	150	45.7						38.4	262.9	21.5	9.8	*						150
190	57.9	85	25.9	170	51.8						16.4	222.2	17.1	7.8	*	46.5	263.9	13.8	6.3	*	170
190	57.9	85	25.9	190	57.9											30.5	237.6	11.4	5.2	*	190
190	57.9	125	38.1	90	27.4	61.9	336.7	28.3	12.8	*											90
190	57.9	125	38.1	110	33.5	53.2	323.5	22.1	10.0	*											110
190	57.9	125	38.1	130	39.6	43.4	305.1	16.8	7.6	*											130
190	57.9	125	38.1	150	45.7	31.2	277.9	12.7	5.8	*	54.3	318.6	22	10.0							150
190	57.9	125	38.1	170	51.8	9.2	220.7	9.9	4.5	*	44.7	301	18.4	8.3							170
190	57.9	125	38.1	190	57.9						32.9	275.3	13	5.9	*	50	299.5	9	4.1	*	190
190	57.9	125	38.1	210	64.0						14	227.1	8.1	3.7	*	39.8	279.2	7.2	3.3	*	210
190	57.9	125	38.1	230	70.1											26.2	247.2	5.7	2.6	*	230

This material is supplied for reference use only. Operator must refer to in-cab Crane Rating Manual and Operator's Manual to determine allowable crane lifting capacities and assembly and operating procedures.

This Page Intentionally Blank

This Page Intentionally Blank

Link-Belt Cranes Lexington, Kentucky www.linkbelt.com

®Link-Belt is a registered trademark. Copyright 2017. We are constantly improving our products and therefore reserve the right to change designs and specifications.